



E-TEC
POWER MANAGEMENT

Complete Power Solutions

Providing Innovative, Bespoke, Turnkey Solutions for
all your ICT and Mission Critical Power Requirements



Power Solutions

About E-TEC

The E-TEC Group of companies was established in 1999 with the aim of supplying Complete Power Solutions to an evermore IT centric world, dependent on continuity and reliability of communication and data processing to ensure the smooth running of today's technology driven businesses.

Trading as E-TEC Power Management, currently in Ireland, UK, Netherlands and Germany, and under the umbrella of E-TEC Power International Ltd., we supply fully integrated innovative solutions, incorporating power, cooling, physical IT infrastructure, network management/monitoring & SCADA, fire protection and security.

Together we continue to grow and develop our knowledge, products and services to an ever more diverse and demanding customer base.



POWER MANAGEMENT

Expertise and Customer Focus

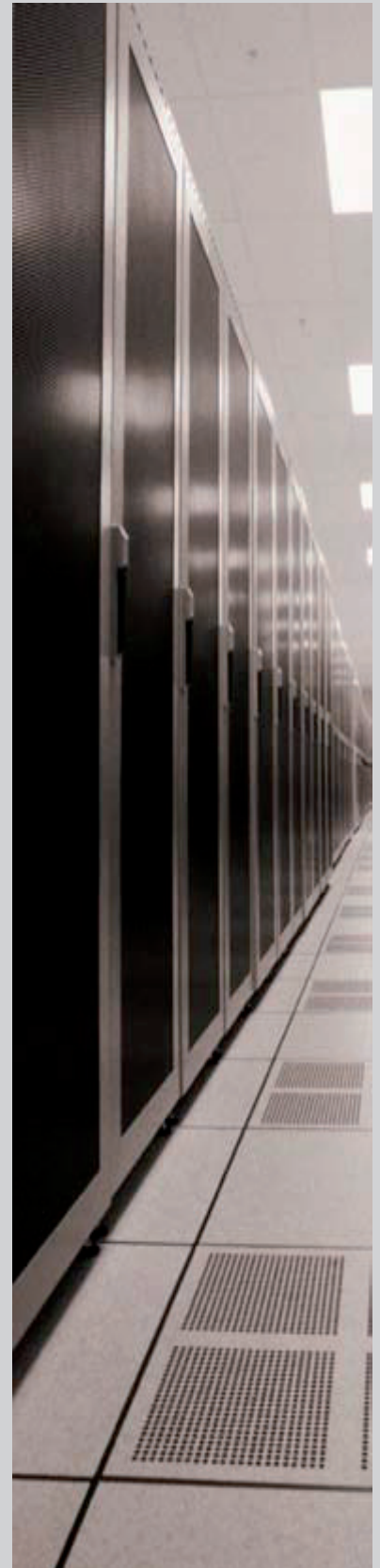
At E-TEC Power Management we pride ourselves in supplying well designed and executed power solutions, minimising or eliminating downtime during normal service and also scheduled maintenance visits. We work closely with clients to design, implement and support complete Best-in-Class Data Centre infrastructural solutions, ensuring maximum availability for mission critical processes, covering many market sectors.

E-TEC is an engineering led company whose personnel have a diversified array of skills spanning each area of endeavour to provide the customer with a complete turnkey solution. Our knowledge combined with our focus and commitment enables us to provide tailored solutions for our customers to help plan for the future in terms of flexibility, adaptability, scalability and redundancy in an environment that is continually changing and evolving.

Power Solutions

Our success has come about through our ability to provide fully integrated, cost effective and scalable solutions within a very wide range of systems and environments. We can provide all or part of your power solution requirements, whether from the initial design phase or an upgrade to an existing system.

- UPS Systems
- LV & MV Switchgear
- Generator Systems
- Cooling Systems
- Rack Solutions
- Fire Protection
- DC Systems
- SCADA
- Virtual Engineering (PEARL)
- Service & Support





Turnkey Data Centre Solutions

E-TEC specialises in providing turnkey data centre solutions.

Whether you need to upgrade an existing power supply or to install a new end-to-end solution E-TEC can design and implement this for you.

We are happy to survey your existing power supply system or to help you to define your ideal solution.

Our project management and engineering team can propose the best technical solution from MV intake to PDU distribution including generator and UPS systems, switchgear and infrastructural solutions.

Working with our partners we can provide the building, fitout and environmental solutions that make up a complete turnkey solution.

Come and talk to us and let your problems become our solutions!

Virtual Engineering (PEARL)

We use our own dedicated PEARL (Package Engineering Application and Reality Layout) software to mirror real or proposed changes to data centres both new and old, as well as develop new data centre designs with the client in real-time. This allows us to work from a realistic virtual test bed and adjust it to simulate and demonstrate your current and future needs. On this software model we can measure power, space, structural requirements and provide costs for a variety of proposed equipment and installation options.

E-TEC is continuously developing PEARL which goes far beyond basic visualisation, incorporating all technical aspects from electrical schematics and specifications to animated installation processes, all in one interactive project specific software package.



SCADA

Total Power Monitoring:

When it comes to power monitoring E-TEC specialises in designing and implementing SCADA (Supervisory Control And Data Acquisition) based solutions, to integrate all key areas from incoming HV supply down to individual LV supplies feeding the data cabinets. Integration between systems allows potential problems to be flagged earlier and actual faults to be traced across systems to determine cause.

With the ability to accurately measure and monitor the power consumption within a building / data centre, you are now able to predict and possibly reduce kilowatt hour consumption, improve energy efficiency, lower carbon emissions and directly impact bottom-line costs for your business.

With system specific graphics & user manuals (including commissioning data), usage is easier and quicker to understand.

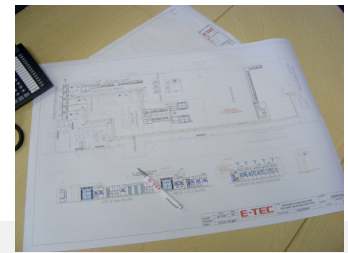


Service & Support

E-TEC Power Management, in conjunction with its partners, can offer a full range of after sales support.

These include:

- Full 24/7 maintenance support
- Full 24/7 help desk
- Regular servicing & preventative maintenance inspections
- Remote monitoring
- Surveys and Optimisation of existing plant and equipment



Health & Safety

E-TEC is accredited by the Safecontractor scheme and is constantly striving to improve its safe working practices. Regular training is organised for all personnel to ensure that they are up to date with current requirements and this training can be extended to sub-contractors as required.

Quality Assurance

E-TEC has been ISO9001 approved since 2003, laying the foundations for the Company to achieve sustained and profitable growth through a consistent quality improvement programme, which we pass on to our clients via our service and solutions.



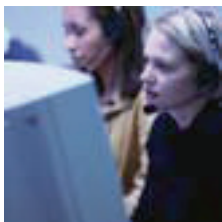
Containerised & Temporary Power Solutions

We are experienced in providing complete temporary power systems, which we can integrate into your existing power infrastructure, allowing major changes to be made without any loss of power and redundancy, thereby maximising your uptime and preventing loss of your critical load.

Turn-Key Power Solutions

Diverse Market Sectors

E-TEC has undertaken projects across a broad and varied range of market areas, each of which has its own specific requirements but all of which share one requirement in common - the need for maximum availability for their site and application.



- Banking & Finance
- ICT & Communications
- Server & Provider
- Healthcare
- Manufacturing
- Rail & Transport



Client List (Extract)

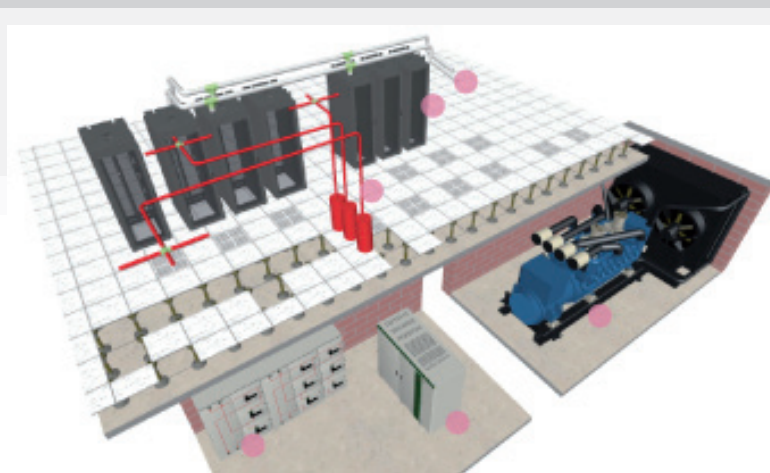
Morgan Stanley	T-Mobile
Sungard Availability Services	IBM
Thomson Reuters	BNP Paribas
LloydsTSB	Level 3 Communications
Barclays	Global Crossing



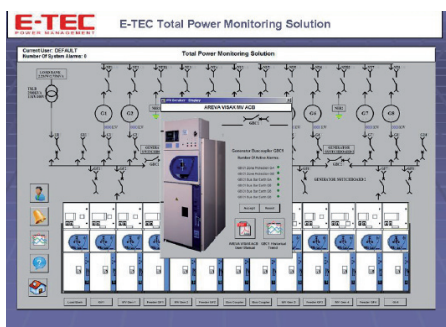
Product Range

Generators:	20kVA to 3MVA +
UPS:	3kVA to 2MW +
DC:	10A to 2400A
Switchgear:	LV up to 6000A + MV up to 1200A
Controls:	Generator & UPS Systems Switchgear Systems SCADA & Monitoring Systems Fuel Systems

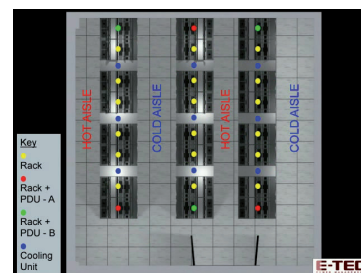
3-D VISUALISATION



SCADA Screenshot



www.e-tecpowerman.com



E-TEC Locations

E-TEC Power Management Ltd
 Unit A6 Bymac Centre
 Northwest Business Park
 Blanchardstown, Dublin 15
 Tel: +353 (0)1 820 5999
 Fax: +353 (0)1 820 5772
 E-mail: info@e-tecpowerman.com

E-TEC Power Management Ltd
 21 Hercules Way
 Aerospace Boulevard
 Farnborough, Hants, GU14 6UU
 Tel: +44 (0) 1252 744 800
 Fax: +44 (0) 1252 744 930
 E-mail: ukinfo@e-tecpowerman.com

E-TEC Power Management GmbH
 Industriestraße 59a
 40764 Langenfeld
 Tel: +49 (0) 2173 3941 0
 Fax: +49 (0) 2173 3941 200
 E-mail: post@e-tecpowerman.de

E-TEC Power Management B.V.
 Schuit 8a
 NL-1724 BD Oudkarspel
 Tel: +31 (0) 72 514 1040
 Fax: +31 (0) 72 514 1041
 E-mail: nl@e-tecpowerman.com